

WEIR / SLUICE GATE INTELLIGENT ACTUATORS

Redline's Intelligent Electro-Hydraulic Actuator solution was developed to assist municipal water management programs by delivering a simple means of regulating wastewater flow in real time! This innovative system eliminates many of the problems associated with obsolete mechanical screw style systems, in that it allows 100% duty cycle operation along with independent force and speed adjustment. With its simple and compact design, the system is readily suited to be retrofitted into existing gate actuator sites. The complete system consists of a cylinder, an integrated hydraulic power unit and a control panel.

The hydraulic power unit design is fully integrated, with virtually all plumbing and valving located within the power unit envelope, thus reducing potential leakage and contamination dramatically. This closed system design ensures a long and practically maintenance free service life.

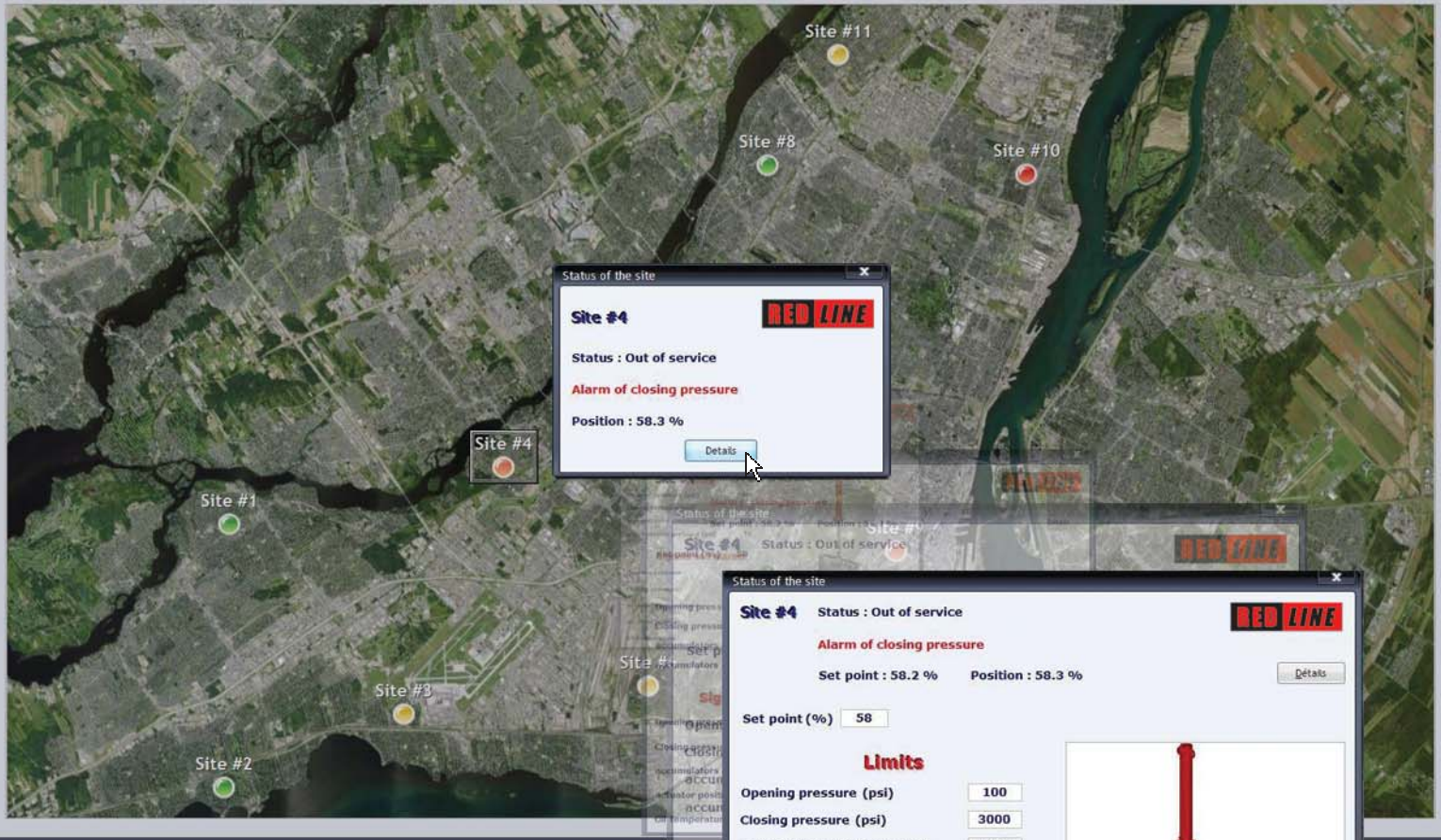
Gate positioning and control are all accomplished in closed loop around the versatile UNIDRIVE SP from Control Techniques. Actuator positioning is achieved in closed loop, without the use of traditional servo valves, and all logic is controlled onboard the drive, without the need for a PLC.



ADVANTAGES

- ▲ **Cost Effective: Reduced installation, maintenance and operating costs**
- ▲ **High Efficiency: Negligible mechanical losses**
- ▲ **Real-time and continuous management of wastewater flows**
- ▲ **Electro-hydraulic design minimizes mechanical breakdown**
- ▲ **Compact design – all parts are manhole friendly**
- ▲ **Quick and easy installation**
- ▲ **Emergency closing option for power failure situations**
- ▲ **Practically maintenance-free**
- ▲ **No PLC Required!**





TECHNICAL FEATURES

- Instant response and validation
- Continuous operation possible
- Remote monitoring via Ethernet IP / Internet
- Local or remote troubleshooting with various sensors (pressures, temperature and position)
- Real time email alarms (email or cell messaging)
- All logic controlled by the Unidrive SP
- Precise close loop positioning
- Totally enclosed hydraulic system
- Local manual mode, with Maintenance menu screen
- Local HMI screen on control enclosure
- Can be integrated easily into an existing management / distributed control system (DCS)
- Filtration not required
- Impact resistant
- All system components are manhole accessible
- Emergency close option using hydraulic accumulators in the event of a power failure

Redline is a proud distributor of :



REDLINE TECHNOLOGIES INC.

206 Brunswick, Pointe-Claire, Québec, Canada H9R 5P9

Phone : 514.429.7733

Toll Free : 1.877.429.7733

Fax : 514.429.7737

email : info@redlinetechnologies.ca

www.redlinetechnologies.ca